



INDOFINE Chemical Company, Inc.

121 Stryker Lane, Bldg. 30, Suite 1 • Hillsborough, NJ 08844 • U.S.A.

Phone: (908) 359-6778 • FAX: (908) 359-1179

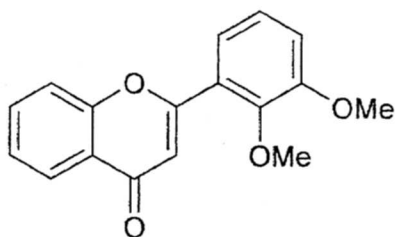
website: www.indofinechemical.com

e-mail: chemical@indofinechemical.com

CERTIFICATE OF ANALYSIS

Cat. No.: D-603

<u>Product:</u>	2',3'-DIMETHOXYFLAVONE
<u>Lot No.:</u>	0008183
<u>Molecular Formula:</u>	C ₁₇ H ₁₄ O ₄
<u>Molecular Weight:</u>	282.30
<u>Melting Point:</u>	81-85°C
<u>Appearance:</u>	Light yellow powder
<u>TLC:</u>	Chloroform:methanol (9:1)
<u>Solubility:</u>	Soluble in chloroform
<u>Purity (HPLC):</u>	99.19%





INDOFINE Chemical Company, Inc.

121 Stryker Lane, Bldg. 30, Suite 1 • Hillsborough, NJ 08844 • U.S.A.

Phone: (908) 359-6778 • FAX: (908) 359-1179

website: www.indofinechemical.com

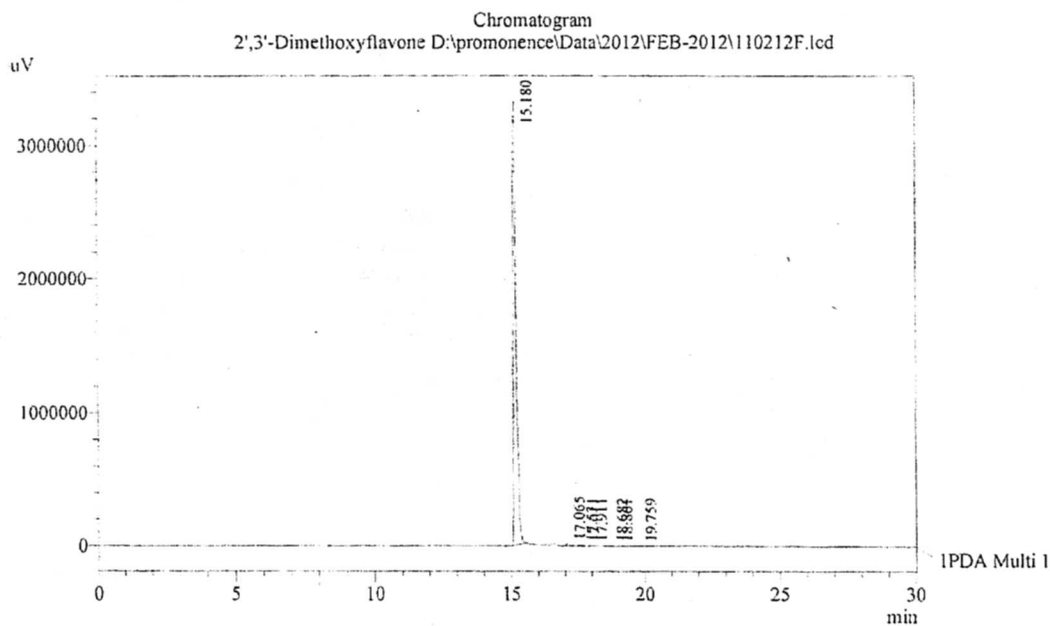
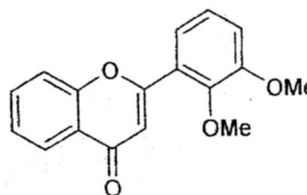
e-mail: chemical@indofinechemical.com

HPLC ANALYSIS

Acquired by : Sanjeev
Sample Name : 2',3'-Dimethoxyflavone
Sample ID : Lot No:-0008183
Injection Volume : 20 uL
Data Filename : 110212F.lcd
Method Filename : Linear Gradient.M.lcm

Catalog No.: D-603
Product name: 2',3'-Dimethoxyflavone
Lot No.: 0008183

Date Acquired : 2/11/2012 3:42:37 PM
Data Processed : 2/11/2012 4:27:02 PM
Column : LUNA C-18(2), (250mm x4.6mm 5.0µ)
Flow : 1.000 mL/min.
Mobile Phase : A(0.05% TFA in water) B(Acetonitrile)
0.01 90 10
12.0 10 90
25.0 10 90
28.0 90 10
30.0 90 10



1 PDA Multi 1 / 254nm 4nm

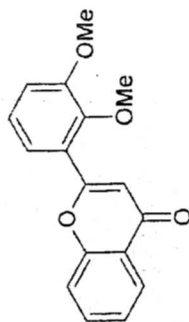
PeakTable

Peak#	Name	Ret. Time	Area	Area %	Relative Retention Time
1	RT:15.180	15.180	26111588	99.19	1.00
2	RT:17.065	17.065	109873	0.42	1.12
3	RT:17.531	17.531	31543	0.12	1.15
4	RT:17.611	17.611	15524	0.06	1.16
5	RT:17.911	17.911	18627	0.07	1.18
6	RT:18.682	18.682	23614	0.09	1.23
7	RT:18.861	18.861	4744	0.02	1.24
8	RT:19.759	19.759	9363	0.04	1.30
Total			26324876	100.00	



INDOFINE Chemical Company, Inc.
121 STRYKER LANE
BLDG. 30, SUITE 1
HILLSBOROUGH, NJ 08844

Catalog No.: D-603
Product name: 2',3'-Dimethoxyflavone
Lot No.: 0008183

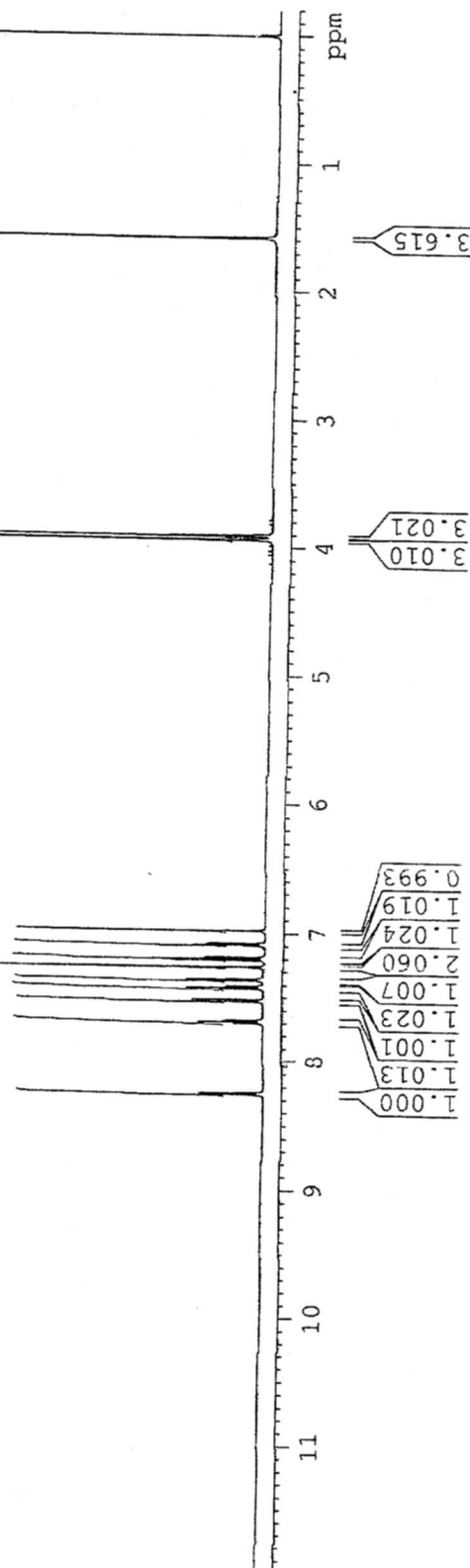


ICC-03
1H IN CDCL3
AVANCE-600
28-2-12

SOLVENT CDCL3
NS 24
DS 0
SMH 11029.412 Hz
FIDRES 0.362381 Hz
AQ 1.3076447 sec
RG 1820
DW 45.333 usec
DE 6.00 usec
TE 298.2 K
D1 1.5000000 sec
TD0 1

***** CHANNEL #1 *****
NUC1 1H
F1 8.30 usec
PL1 -1.00 dB
PL1W 15.1789314 W
SFO1 600.3440821 MHz

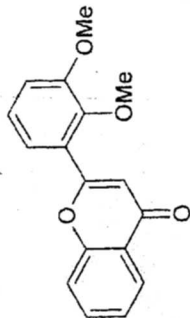
F2 - Processing parameters
SI 32768
SF 600.3300136 MHz
WDW EM
SSB 0
LB 0
GB 0
PC 1.00





INDOFINE Chemical Company, Inc.
 121 STRYKER LANE
 BLDG. 30, SUITE 1
 HILLSBOROUGH, NJ 08844

Catalog No.: D-603
 Product name: 2',3'-Dimethoxyflavone
 Lot No.: 0008183



ICC-03
 1H IN CDCL3
 AVANCE-600
 28-2-12

SOLVENT CDCL3
 NS 24
 DS 0
 SWH 11029.412 Hz
 FIDRES 0.382381 Hz
 AQ 1.3076447 sec
 RG 1820
 LW 45.333 usec
 DE 6.00 usec
 TE 298.2 K
 F1 1.50060000 sec
 TD0 1

===== CHANNEL #1 =====
 NUC1 1H
 P1 8.30 usec
 PL1 -1.00 dB
 PL1W 15.17893314 W
 SF01 600.3340821 MHz

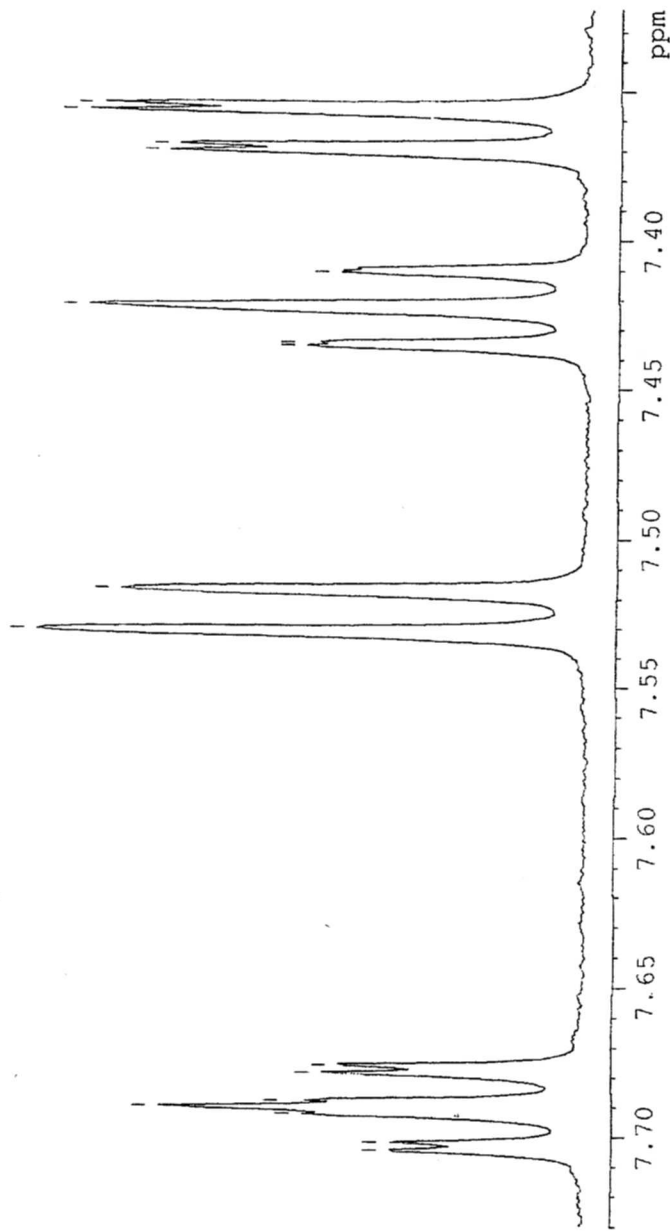
F2 - Processing parameters
 SI 32768
 SF 600.3300136 MHz
 MDW EM
 SSB 0
 LB 0.30 Hz
 GB 0
 PC 1.00

7.705
7.702
7.693
7.691
7.689
7.679
7.677

7.532
7.518

7.436
7.435
7.428
7.411

7.371
7.369
7.358
7.356

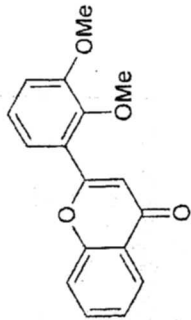


7.70
7.65
7.60
7.55
7.50
7.45
7.40
ppm



INDOFINE Chemical Company, Inc.
 121 STRYKER LANE
 BLDG. 30, SUITE 1
 HILLSBOROUGH, NJ 08844

Catalog No.: D-603
 Product name: 2',3'-Dimethoxyflavone
 Lot No.: 0008183

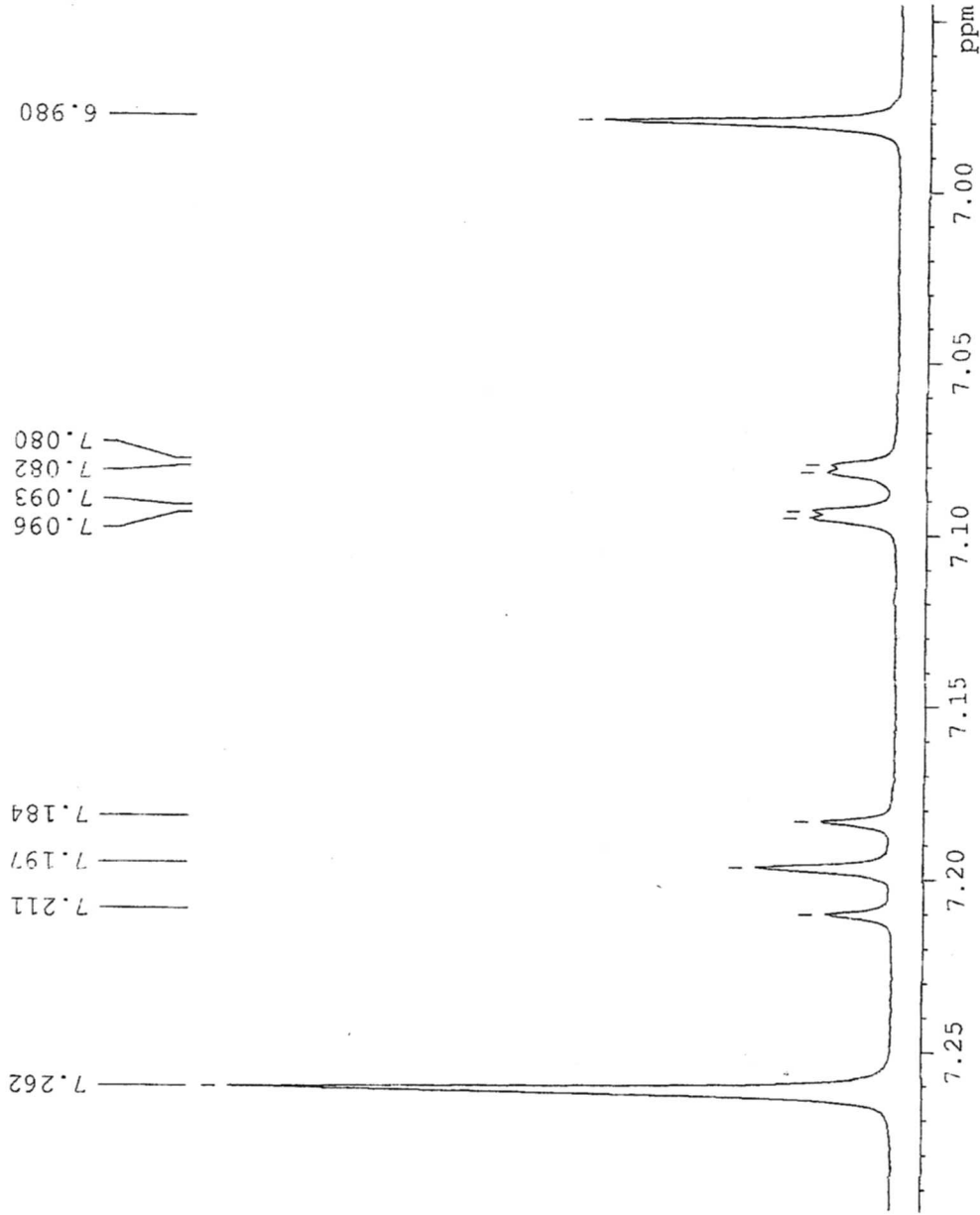


SOLVENT CDCl3
 NS 24
 DS 2
 SRH 11039.412 Hz
 FIDRES 0.382381 Hz
 AQ 1.3076447 sec
 RG 1920
 DE 45.333 usuc
 TE 298.2 K
 D1 1.5000000 sec
 TD0 1

===== CHANNEL f1 =====
 NUC1 1H
 P1 8.30 usuc
 PL1 -1.00 dB
 FL1W 15.1789314 W
 SFO1 600.314821 MHz

F2 - Processing Parameters
 SI 32768
 SF 600.3300136 MHz
 WDW EM
 SSB 0
 VB 0.30 Hz
 CB 0
 PC 1.00

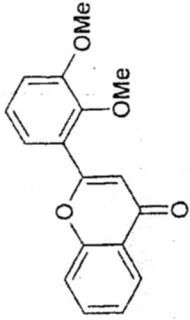
ICC-03
 1H IN CDCl3
 AVANCE-600
 28-2-12





INDOFINE Chemical Company, Inc.
 121 STRYKER LANE
 BLDG. 30, SUITE 1
 HILLSBOROUGH, NJ 08844

Catalog No.: D-603
 Product name: 2',3'-Dimethoxyflavone
 Lot No.: 0008183



ICC-03
 1H IN CDCL3
 AVANCE-600
 28-2-12

```

SOLVENT CDCL3
NS 24
LS 0
SMH 11029.412 Hz
FIDRES 0.382381 Hz
AQ 1.3076447 sec
RG 1820
DW 45.333 usec
DE 6.00 usec
TE 298.2 K
D1 1.50000000 sec
TD0 1

===== CHANNEL f1 =====
NUC1 1H
PI 8.30 usec
PL1 -1.00 dB
F1F1W 15.17893314 W
SFO1 600.3340821 MHz

F2 - Processing parameters
SI 32768
SF 600.3300136 MHz
WDW EM
SSB 0
LB 0.30 Hz
GB 0
PC 1.00
  
```

8.261
 8.258
 8.247
 8.245

6.935
 6.906

1.578

8.28 8.26 ppm

3.8 3.6 3.4 3.2 3.0 2.8 2.6 2.4 2.2 2.0 1.8 ppm